



WINTERPLACE

# Event Venue Information







Winterplace Ski Resort  
has several beautiful  
settings to host weddings,  
wedding receptions,  
family reunions, class  
reunions, company  
picnics, conferences and  
so much more.

# Venues

---



## The Mountain House

The Mountain House is a 10,000 square foot facility located mid mountain, with rustic charm and a beautiful view of the slopes. The venue boasts a large outdoor deck area for utilizing indoor and outdoor seating, indoor restroom facilities, prep kitchen and large fireplace (for decoration only) and is ADA accessible.

Cost: \$4,000.00

The event space will be available to you from 12:00pm the day before your event through 12:00pm the day after your event. Renter is responsible for the set up and clean up after the event, clean up list is attached. . The venue is available to be rented for \$300 per day if your event should require additional time outside the time the venue is rented. Renter is responsible for the set up and clean up after the event, clean up list is attached.

Max. Guest: 300

Rental of the Mountain House kitchen includes use of the deli cooler, stove and oven. Pots, pans and utensils are not provided. \$500.00

Included:

20 square tables (36") - 55 round tables (36") - 300 chairs

The Mountain House offers multiple ceiling fans but is not climate controlled.

# Venues

---



## Mickey's

Mickey's is a 2,400 square foot facility with wall-to-wall oak and large windows providing beautiful natural lighting, a wraparound deck perfect for utilizing outdoor seating, beautiful rustic bar for serving buffet style meals, indoor restrooms and a large stone fireplace. ADA accessible.

Cost: \$1,000.00

The event space will be available to you from 12:00pm the day before your event through 12:00pm the day after your event. Renter is responsible for the set up and clean up after the event, clean up list is attached. . The venue is available to be rented for \$300 per day if your event should require additional time outside the time the venue is rented. Renter is responsible for the set up and clean up after the event, clean up list is attached.

Max. Guest: 50

Mickey's is NOT climate controlled and does not offer kitchen facilities.

# Venues

---



## The Snowdrift Lounge

The Snowdrift Lounge is located on the second floor of the Resort Center and offers views of the slopes, a bar and spacious deck area. Historically this area has hosted parties, reunions, formals, rehearsal dinners and receptions.

Cost: \$750

The event space will be available to you from 12:00pm the day before your event through 12:00pm the day after your event. Renter is responsible for the set up and clean up after the event, clean up list is attached. . The venue is available to be rented for \$300 per day if your event should require additional time outside the time the venue is rented. Renter is responsible for the set up and clean up after the event, clean up list is attached.

Max Guests: 50 Indoor/ 50 Outdoor



# Venues

---



## Resort Center

A 12,000 sq. ft. facility at the base of the Ski Area and would be a great facility to hold a lock-in, meeting, workshop, dance, or any event where you need a lot of space. Complete with a stage, stage lights and sound system to host your entertainment. Plenty of lighted parking available. ADA accessible.

Cost: \$2500

Max Guests: 500

The event space will be available to you from 12:00pm the day before your event through 12:00pm the day after your event. Renter is responsible for the set up and clean up after the event, clean up list is attached. . The venue is available to be rented for \$300 per day if your event should require additional time outside the times the venue is rented. Renter is responsible for the set up and clean up after the event, clean up list is attached.



# Payments



---

Payment plans for scheduled events are as follows:

A deposit of 50% of your venue total is due within 2 weeks of booking the event, along with the signed contract.

Winterplace will hold the event date for 2 weeks without a deposit.

Final payment is due 90 days prior to the scheduled event along with a valid credit card number for security deposit in case of damages. If any additional services are added (alcohol, beer, etc.) after 30 days prior to the event, payment for the service is due upon placing your order with a Winterplace representative.



# Payments



---

## **Security Deposit**

Guests must have a valid credit card number on file when the deposit is paid and the contract signed. Charges will only be processed if it is deemed that damage was done to the property during the reserved stay by guest(s) and will be used for repairs or excessive housekeeping liability if all property is not left as required.

## **Cancellation Policy**

A deposit of 50% is due at the time of reservation. Final balance will be due 90 days prior to the scheduled event. Cancellations made more than 90 days prior to the scheduled event will forfeit their deposit. Any cancellations made within 90 days of the scheduled event will forfeit their deposit and all of fees paid.



# Policies

---



## Catering

Outside catering is permitted in Winterplace facilities. If using a catering service, you must present to Winterplace a copy of the Caterer's Business License and Health Card. Children under the age of 16 are not permitted in the prep areas of the kitchens.



## Alcohol

All alcoholic beverages must be purchased through Winterplace Ski Resort. Price lists are available upon request one month prior to function. Beer and Wine only.



## Decorations

No candles, loose beads, gems or marbles, confetti, loose glitter, sparklers or pyrotechnics are permitted inside the facility. If you are having a flower girl throw petals for the outdoor ceremony, please use real petals. No artificial petals, rice, pyrotechnics, fireworks, or sky lanterns permitted outside. Use of birdseed, bubble machines and wedding sparklers are permitted outside for wedding and reception farewells (in designated area only and must receive prior approval by Winterplace staff).



## Parking

Winterplace offers plenty of parking. Overnight parking is not permitted. Please make sure all guests are aware of this policy.

# Lodging



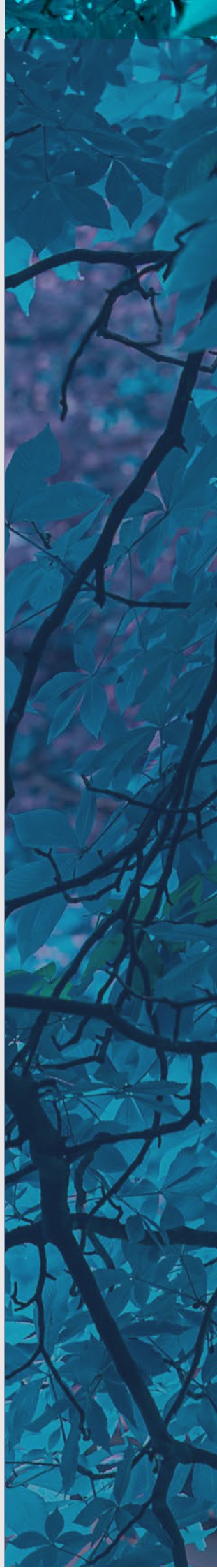
## Cabins at Winterplace

Winterplace offers two bunkhouse style cabins. Each cabin has four bunk rooms with twelve bunk beds, two sinks, two toilets and one shower in each bunk. These cabins do not have kitchen facilities.



## Local Lodging

Glade Springs Resort is a wonderful choice if you are looking for numerous amenities. Slope-side cabins and condominiums are offered on [vrbo.com](https://www.vrbo.com). A complete list of our lodging partners is available at [www.winterplace.com/lodging](http://www.winterplace.com/lodging). Additional lodging available in Princeton, Beckley and Daniels WV.



# Information

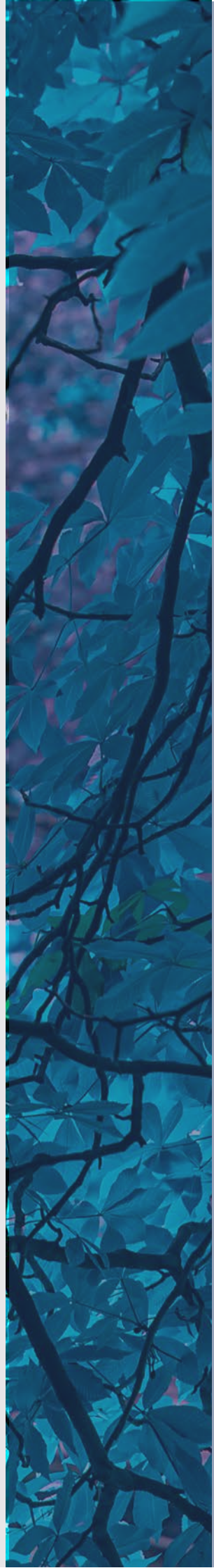


## Tours

We kindly request that you schedule a tour by contacting us. Due to it being our “off-season,” it is not possible for us to accommodate drop-ins.

## Contact Us:

Thank you for considering Winterplace Ski Resort as the site of your event. You may contact Kristen Mann, our Event Coordinator at 304-787-3221 ext. 123 or email [kristen@winterplace.com](mailto:kristen@winterplace.com) if you have further questions.







W

WINTERPLACE



winterplace.com





# WINTERPLACE



[winterplace.com](http://winterplace.com)